



TRIO A DUO
VIOLINO, E BASSO.

del sign.^{re} Luis Boquerini[?]
di Luca.

Violino Primo.

Allegro
51.

This image shows a page of handwritten musical notation on aged, yellowed paper. The score consists of eight staves of music, arranged in two systems of four staves each. The notation is written in dark ink and includes various musical symbols such as notes, rests, beams, and slurs. The first staff begins with a treble clef and a key signature of two flats (B-flat and E-flat). The second staff continues the melody with similar notation. The third and fourth staves show more complex rhythmic patterns and phrasing. The fifth staff features a prominent slur over a series of notes. The sixth staff ends with a double bar line and a sharp sign (#). The seventh staff begins with a new section, marked with a 'C' time signature and a key signature of two flats. The eighth staff concludes the piece with a final cadence. The paper shows signs of age, including some staining and foxing.

A page of handwritten musical notation on aged, yellowed paper. The page contains eight staves of music, each with a treble clef and a key signature of two flats (B-flat and E-flat). The notation is dense and includes various rhythmic values, slurs, and ornaments. The ink is dark brown, and the paper shows signs of age with some staining and foxing. The music appears to be a single melodic line, possibly for a keyboard instrument like a harpsichord or spinet.

siqve Minuet

Minuet

Handwritten musical notation for the Minuet section, consisting of three staves of music. The notation is in a treble clef with a key signature of one flat (B-flat) and a 3/4 time signature. The music features a melodic line with eighth and sixteenth notes, often beamed together, and a bass line with chords and single notes. The paper shows signs of age, including foxing and staining.

Trio

Handwritten musical notation for the Trio section, consisting of three staves of music. The notation is in a treble clef with a key signature of one flat (B-flat) and a 3/4 time signature. The music features a melodic line with eighth and sixteenth notes, often beamed together, and a bass line with chords and single notes. The paper shows signs of age, including foxing and staining.

Al Minuet. D. C.



SECONDO VIOLINO.

Pargo-

t

The first system of the handwritten musical score consists of five staves. The top staff is in treble clef with a key signature of two flats and a 6/8 time signature. The second and third staves are in bass clef. The fourth and fifth staves are in treble clef. The notation includes various note values, rests, and dynamic markings such as 'p' and 'f'. There are also some decorative flourishes and a small 't' above the first staff.

The second system of the handwritten musical score consists of three staves. The top staff is in treble clef with a key signature of two flats and a 2/4 time signature. The middle and bottom staves are also in treble clef. The notation includes various note values, rests, and dynamic markings such as 'p' and 'f'. There are also some decorative flourishes and a small 't' above the first staff.

A page of handwritten musical notation on aged, yellowed paper. The score consists of ten staves. The first two staves appear to be a vocal line, with the first staff starting with a treble clef and a key signature of one flat. The remaining eight staves are for a keyboard instrument, likely a harpsichord or spinet, with a grand staff (treble and bass clefs) and a key signature of one flat. The notation is dense, featuring many sixteenth and thirty-second notes, often beamed together in groups. There are various ornaments and slurs throughout the piece. The paper shows signs of age, including foxing and some staining.

Fin
Finet.

Minuet

Handwritten musical notation for the Minuet section, consisting of three staves of music in 3/4 time with a key signature of one flat. The notation includes various rhythmic values, slurs, and dynamic markings.

Trio

Handwritten musical notation for the Trio section, consisting of three staves of music in 3/4 time with a key signature of two flats. The notation includes various rhythmic values, slurs, and dynamic markings.

1782.

D. C. al Minuet

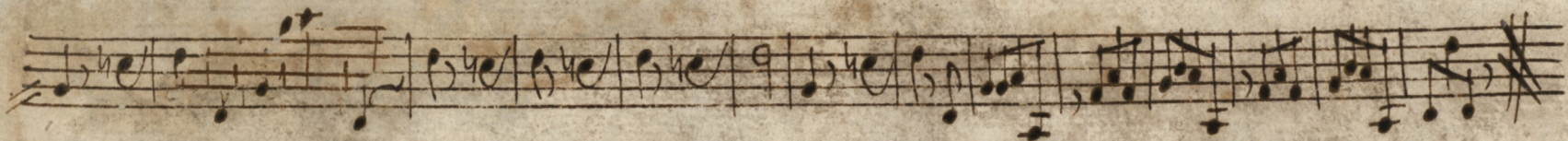
Largo

Basso

F

Handwritten musical score for Bass, starting with *Largo* and changing to *Allegro*. The score is written on ten staves. The first staff begins with a treble clef, a key signature of two flats (B-flat and E-flat), and a 6/8 time signature. The tempo *Largo* is indicated at the top left. The piece is titled *Basso* and marked with a Roman numeral *F*. The score consists of ten staves of music. The first seven staves are in 6/8 time. The eighth staff begins with a double bar line, a new key signature of one flat (B-flat), and a 4/4 time signature, with the tempo *Allegro* written above it. The final two staves continue in 4/4 time. The notation includes various note values, rests, and phrasing slurs. The paper shows signs of age, including foxing and some staining.

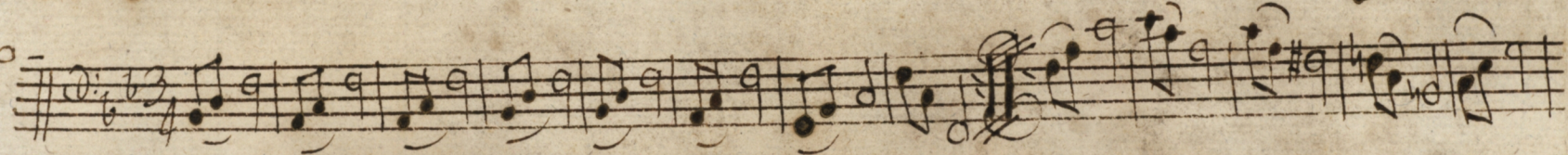
Volni supiro



Minuet



trio-



D. C. *Al Minuet.*